

vtech[®]
Baby

User's Manual

Sort 'n' Spin Helicopter



© 2014 VTech
Printed in China
91-002902-001 ^{UK}

VTech understands that a child's needs and abilities change as they grow and with that in mind we develop our toys to teach and entertain at just the right level...

vtech Baby

Toys that will stimulate their interest in different textures, sounds and colours

I am...

...responding to colours, sounds and textures

...understanding cause and effect

...learning to touch, reach, grasp, sit-up, crawl and toddle

Birth-36 months



Pre-School

Interactive toys to develop their imagination and encourage language development

I want...

...to get ready for school by starting to learn the alphabet and counting

...my learning to be as fun, easy and exciting as can be

...to show my creativity with drawing and music so my whole brain develops

3-6 years



Electronic Learning Computers

Cool, aspirational and inspiring computers for curriculum related learning

I need...

...challenging activities that can keep pace with my growing mind

...intelligent technology that adapts to my level of learning

...National Curriculum based content to support what I'm learning at school

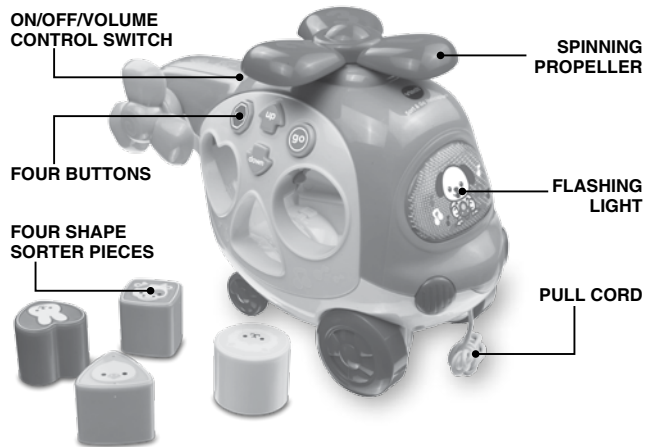
4-10 years



To learn more about this and other VTech® products, visit www.vtechuk.com

INTRODUCTION

Thank you for purchasing the **VTech® Sort 'n' Spin Helicopter** learning toy! Launch your little one's imagination with **VTech's Sort 'n' Spin Helicopter**. Lift off and learn with four shape sorter pieces, press buttons and engaging fun sound effects. Little minds will soar while learning shapes, colours and animals. The sky is the limit!



INCLUDED IN THIS PACKAGE

- One VTech® Sort 'n' Spin Helicopter
- Four shape sorter pieces
- One user's manual

WARNING:

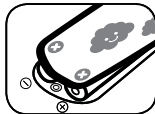
All packing materials, such as tape, plastic sheets, packaging locks and tags are not part of this toy, and should be discarded for your child's safety.

NOTE:

Please keep this instruction manual as it contains important information.

BATTERY INSTALLATION

1. Make sure the unit is turned **OFF**.
2. Locate the battery cover on the bottom of the unit. Use a screwdriver to loosen the screw.
3. Install 2 new AAA (AM-4/LR03) batteries following the diagram inside the battery box. (The use of new alkaline batteries is recommended for maximum performance.)
4. Replace the battery cover and tighten the screw to secure.



BATTERY NOTICE

- Use new alkaline batteries for maximum performance.
- Use only batteries of the same or equivalent type as recommended.
- Do not mix different types of batteries: alkaline, standard (carbon-zinc) or rechargeable (Ni-Cd, Ni-MH), or new and used batteries.
- Do not use damaged batteries.
- Insert batteries with the correct polarity.
- Do not short-circuit the battery terminals.
- Remove exhausted batteries from the toy.
- Remove batteries during long periods of non-use.
- Do not dispose of batteries in fire.
- Do not charge non-rechargeable batteries.
- Remove rechargeable batteries from the toy before charging (if removable).
- Rechargeable batteries are only to be charged under adult supervision.

Disposal of batteries and product



The crossed-out wheellie bin symbols on products and batteries, or on their respective packaging, indicates they must not be disposed of in domestic waste as they contain substances that can be damaging to the environment and human health.



The chemical symbols Hg, Cd or Pb, where marked, indicate that the battery contains more than the specified value of mercury (Hg), cadmium (Cd) or lead (Pb) set out in Battery Directive (2006/66/EC). The solid bar indicates that the product was placed on the market after 13th August, 2005.

Help protect the environment by disposing of your product or

batteries responsibly.


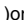
For more information, please visit:

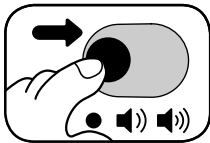
www.recycle-more.co.uk

www.recyclenow.com

PRODUCT FEATURES

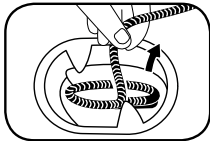
1. ON/OFF/VOLUME CONTROL SWITCH

To turn the unit **ON**, slide the **ON/OFF/VOLUME CONTROL SWITCH** to the **LOW VOLUME** () or the **HIGH VOLUME** () position. To turn the unit **OFF** (●), slide the **ON/OFF/VOLUME CONTROL SWITCH** to the **OFF** (●) position.



2. PULL CORD

To convert the unit from a push toy to a pull toy, remove the pull cord from the storage compartment on the bottom of the helicopter. For your child's safety we suggest you store the pull cord in the compartment until your child is walking.



3. AUTOMATIC SHUT-OFF

To preserve battery life, the **VTech® Sort 'n' Spin Helicopter** will automatically power-down after approximately 24 seconds without input. The unit can be turned on again by pressing any button or spinning the propeller.

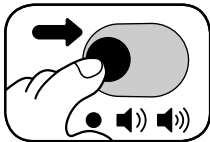
4. TWINE USED IN PACKAGING

Please cut the twine which is used for fixing the blocks in place, then remove the remaining twine from the helicopter. For your child's safety, please dispose of the twine.



ACTIVITIES

1. Slide the **on/off/volume control switch** to turn the unit on. You will hear a fun sound, a song and a phrase. The light will flash with the sounds.



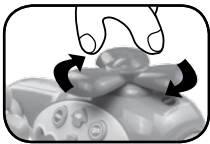
2. Press the **arrow buttons** to hear fun sounds, phrases, a song and learn about opposites. The light will flash with the sounds.



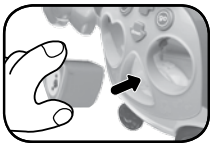
3. Press the **stop and go buttons** to hear fun sounds, phrases, a song and learn about opposites. The light will flash with the sounds.



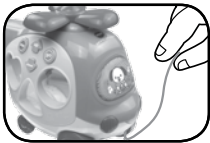
4. Spin the **propeller** to hear fun sounds and phrases. The light will flash with the sounds.



5. Insert the **shape sorter pieces** into the windows to learn shapes, colours and animals. The light will flash with the sounds.



6. Push or pull the helicopter to hear melodies and playful phrases. The light will flash with the sounds.



Sing-Along Song Lyrics

Sing-Along Song 1

I'm a friendly helicopter.
Come and fly with me.
Up to the sky,
Here we go!

Sing-Along Song 2

Up, up, up, up to the sky!

Sing-Along Song 3

Down, down, down, down to land!

Sing-Along Song 4

I'm excited and ready to go, go, go!

Sing-Along Song 5

Time for a rest, I'm ready to stop, stop, stop.

MELODY LIST:

1. Arkansas Traveller
2. Camptown Races
3. Toyland
4. Skip To My Lou
5. Froggy Went a Courtin'
6. Polly Wolly Doodle
7. Happy Farmer
8. Yankee Doodle
9. Oh! Susanna
10. This Old Man
11. Boys and Girls Go Out to Play
12. Little Boy Blue
13. Ring Around the Rosy
14. Pop! Goes the Weasel
15. Aiken Drum

CARE & MAINTENANCE

1. Keep the unit clean by wiping it with a slightly damp cloth.
2. Keep the unit out of direct sunlight and away from any direct heat source.
3. Remove the batteries when the unit will not be in use for an extended period of time.
4. Do not drop the unit on hard surfaces and do not expose the unit to moisture or water.

TROUBLESHOOTING

If for some reason the program/activity stops working or malfunctions, please follow these steps:

1. Please turn the unit **OFF**.
2. Interrupt the power supply by removing the batteries.
3. Let the unit stand for a few minutes, then replace the batteries.
4. Turn the unit **ON**. The unit should now be ready to play again.
5. If the product still does not work, replace with an entire set of new batteries.

If the problem persists, please call our Consumer Services Department at 01235 546810 (from UK) and +44 1235 546810 (outside UK), and a service representative will be happy to help you.

IMPORTANT NOTE:

Creating and developing **VTech®** products is accompanied by a responsibility that we take very seriously. We make every effort to ensure the accuracy of the information, which forms the value of our products. However, errors sometimes can occur. It is important for you to know that we stand behind our products and encourage you to call our Consumer Services Department at 01235 546810 (from UK) and +44 1235 546810 (outside UK) with any problems and/or suggestions that you might have. A service representative will be happy to help you.

**CLASS 1
LED PRODUCT**



PRODUCT WARRANTY



Thank you for choosing this quality product from VTech. We hope it will bring many hours of entertainment, imaginative play and learning.

1. The product detailed above is covered by a one year warranty from the date of purchase, against any defects in materials or workmanship.
2. The product may be returned to the place of purchase. Alternatively the product can be returned to VTech Electronics Europe plc (see address below), with proof of purchase, without proof of purchase no replacement will be provided.
3. VTech Electronics Europe plc will examine the product and if it is found to be defective due to faulty materials or workmanship, will replace the product at their discretion.
4. If the product covered by this warranty is damaged due to misuse, modification or unauthorised repair, or because of faulty batteries, battery discharge or incorrect electrical connections, then this warranty becomes void.
5. This warranty is personal to the original purchaser and is not transferable.
6. Breakages to the LCD screen are not covered by the warranty.
7. Returns to VTech Electronics Europe plc should include a cheque or postal order for £1.50 towards the cost of return postage and packaging.
8. Products returned to VTech Electronics Europe plc, should be addressed as follows and packed carefully to avoid damage in transit (Please do not include batteries or adaptor).
Please include details of the fault together with your name and address.

VTech Electronics Europe plc, c/o Tablogix Limited, 200 Milton Park, Abingdon, Oxon OX14 4TA

THIS WARRANTY IS OFFERED AS AN EXTRA BENEFIT AND DOES NOT AFFECT CONSUMERS' STATUTORY RIGHTS.

This warranty is valid for the UK and Eire only. For products purchased outside the UK and Eire, please contact your local distributor or place of purchase.

